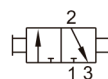


Symbol



Product feature

1. There are several ways of internal and external thread connection, suitable for the application in different pipeline systems.
2. The direction-change slides smoothly and has good hand feeling.
3. There is large effective circulating area.
4. The valve spool surface is treated with acid washing passivation, and the surface of valve body is oxidized to keep the color for a long time.

Ordering code

HSV 01

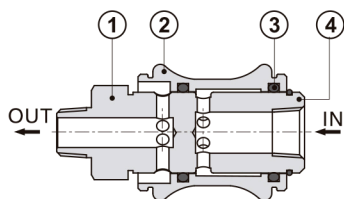
① ②

①	Model
	HSV: Hand slide valve
②	Port Size
	01: 1/8" G
	02: 1/4" G
	03: 3/8" G
	04: 1/2" G

Specification

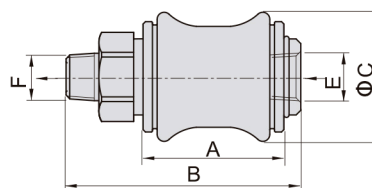
Valve	HSV01	HSV02	HSV03	HSV04
Fluid	Air(to be filtered by 40 μ m filter element)			
Acting	Manual control direct acting type			
Port size	1/8"G	1/4"G	3/8"G	1/2"G
Valve type	3 port 2 position			
Lubrication	Not required			
Operating pressure	0~8bar(0~114psi)			
Proof pressure	15bar(215psi)			
Temperature $^{\circ}$ C	-20~70			
Orifice size	23.0mm ² (Cv=1.28)	40.0mm ² (Cv=2.20)	62.0mm ² (Cv=3.50)	140.0mm ² (Cv=7.80)
Material of body	Aluminum alloy			

Inner structure



No.	Item
(1)	Valve plug
(2)	Body
(3)	O -ring
(4)	Clip

Dimensions



Model\Item	A	B	C	E	F
HSV01	30	50	27.5	1/8"G	1/8"G
HSV02	32.5	58	30	1/4"G	1/4"G
HSV03	39	68.5	35.5	3/8"G	3/8"G
HSV04	50	85.5	44	1/2"G	1/2"G